



Relatório Fotográfico





RELATÓRIO FOTOGRÁFICO

NOME DO PROJETO: REFORMA E ADAPTAÇÃO DO CRAS (CENTRO DE REFERÊNCIA DE ASSISTÊNCIA SOCIAL), LOCALIZADA NA RUA PARINTINS, S/N, BAIRRO UNIÃO, ZONA URBANA DO MUNICÍPIO DE MANACAPURU/AM. PARA ATENDER AS NECESSIDADES DA SECRETARIA MUNICIPAL DE ASSISTÊNCIA SOCIAL – SEMAS.



FOTO 01



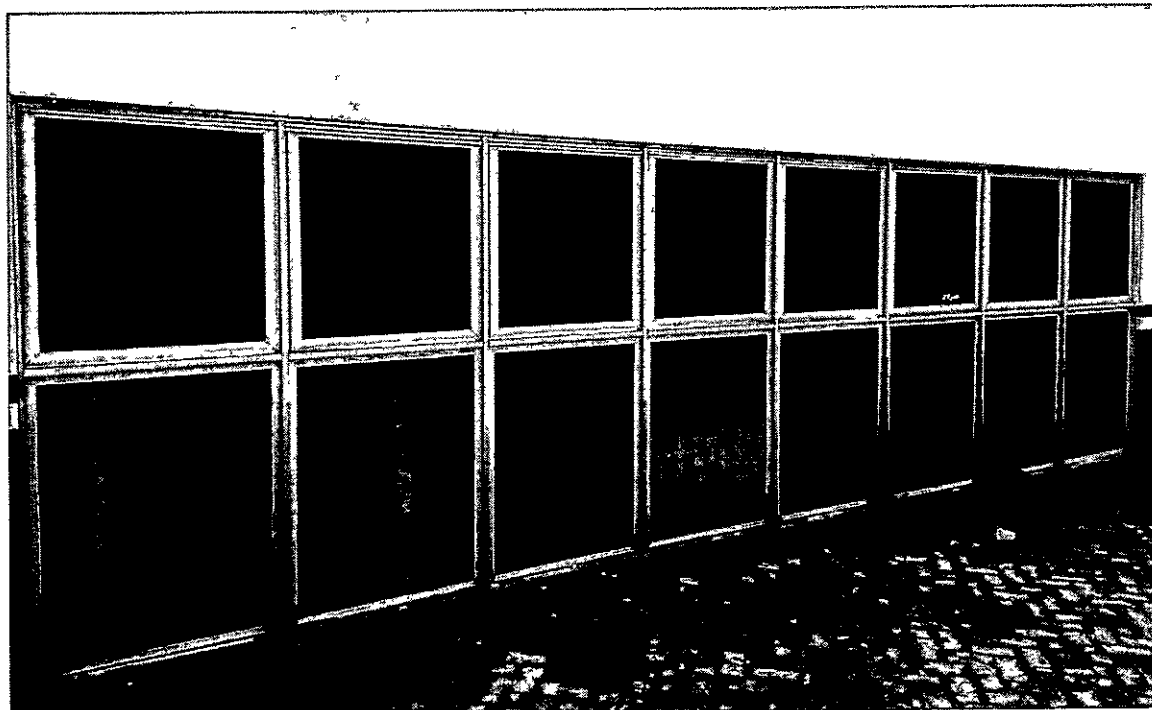


FOTO.02

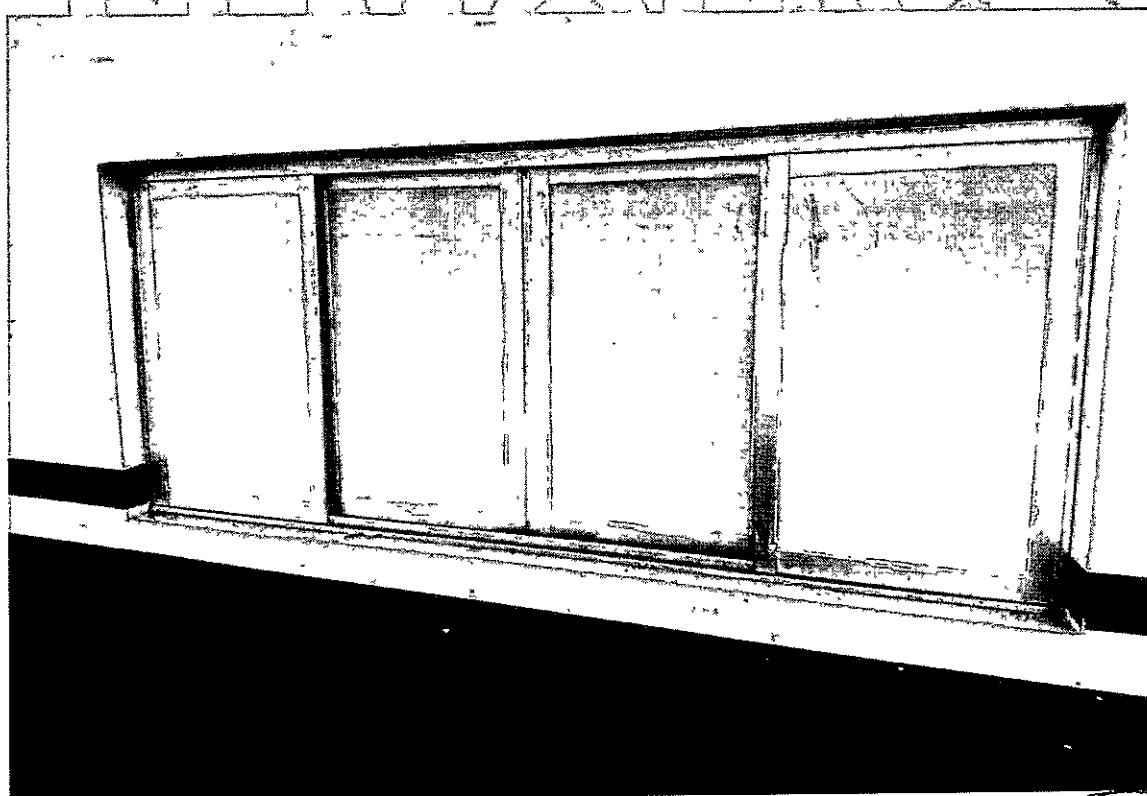


FOTO 03



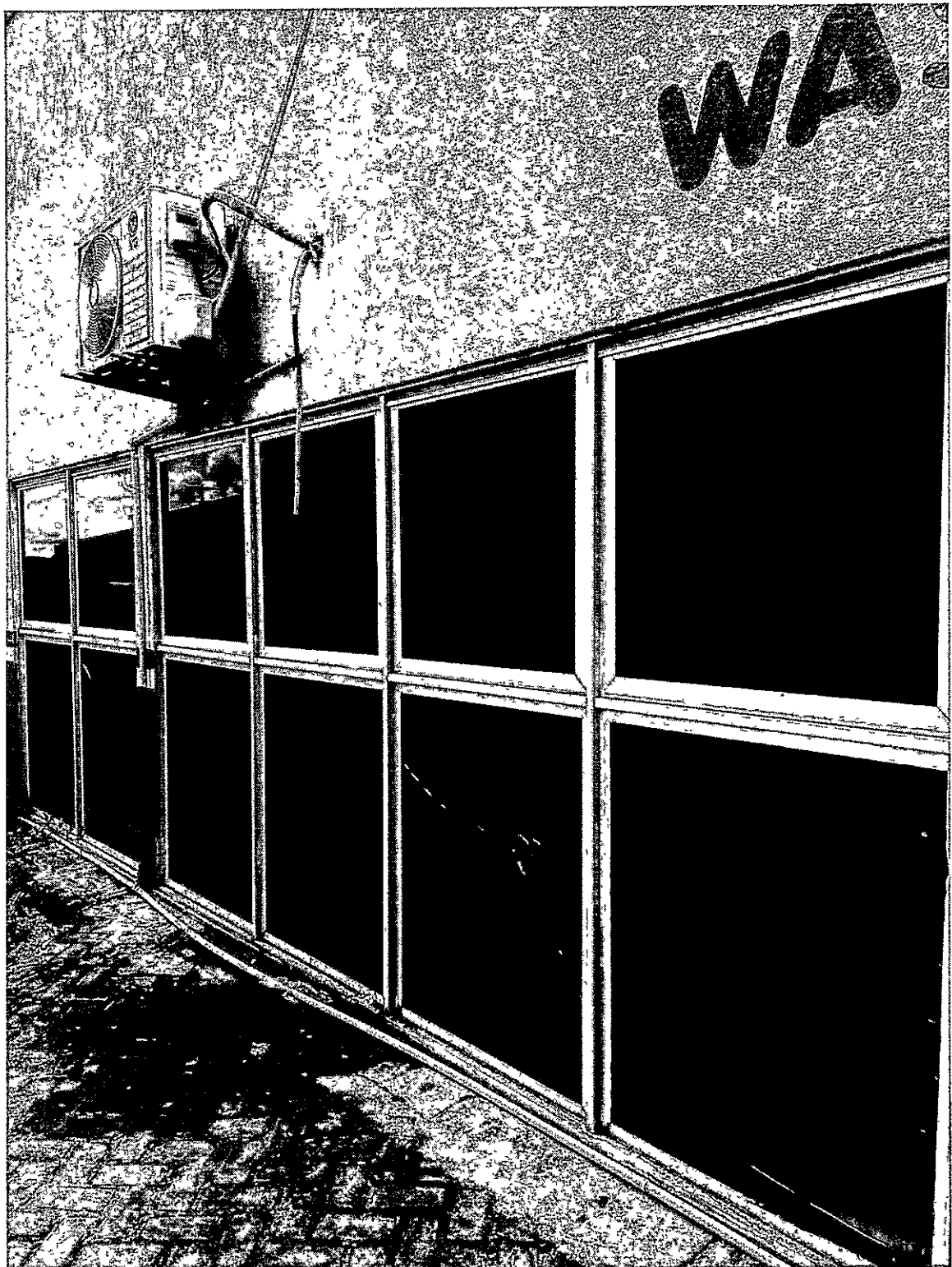


FOTO 04





FOTO 05





FOTO 06

PREFEITURA MUNICIPAL DE MANACAPURU – PMM
Secretaria Municipal de Obras e Serviços Públicos –SEMOSP
Endereço: Boulevard Pedro Rates de Oliveira nº 443 - Centro – CEP 69.400-282
EMAIL: semospmpu@hotmail.com
CNPJ: 04.274.064/0001-31





FOTO 07

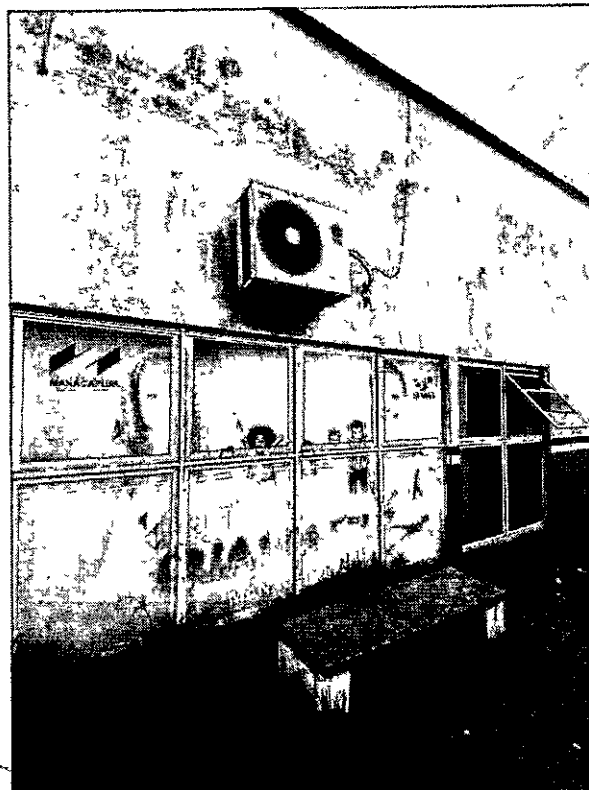


FOTO 08



FOTO 09





FOTO 10



FOTO 11



FOTO 12



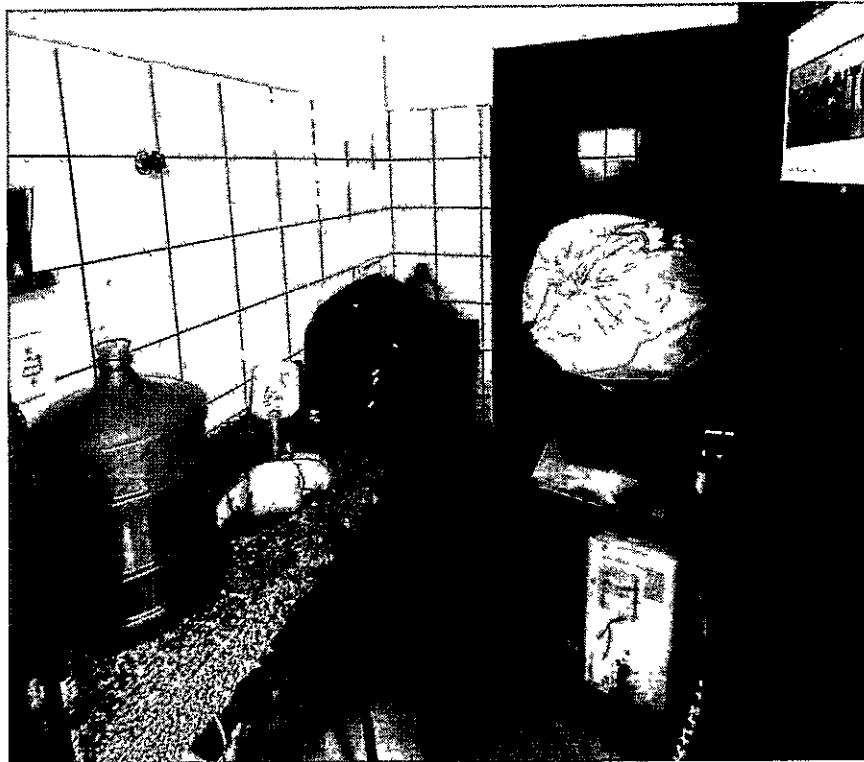


FOTO 13

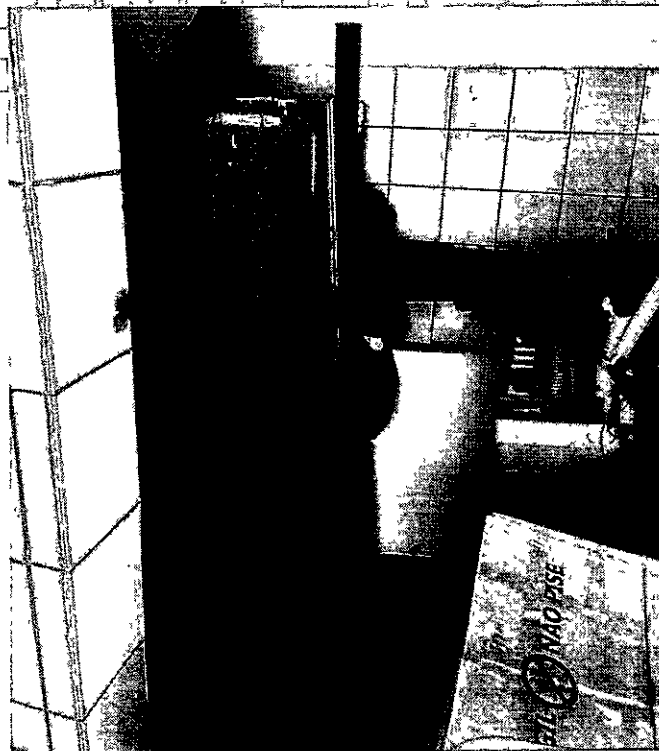
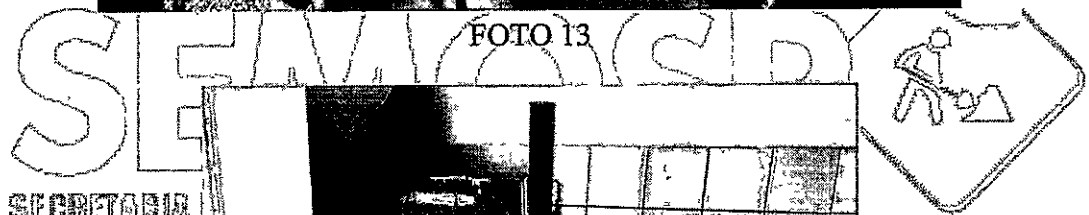


FOTO 14



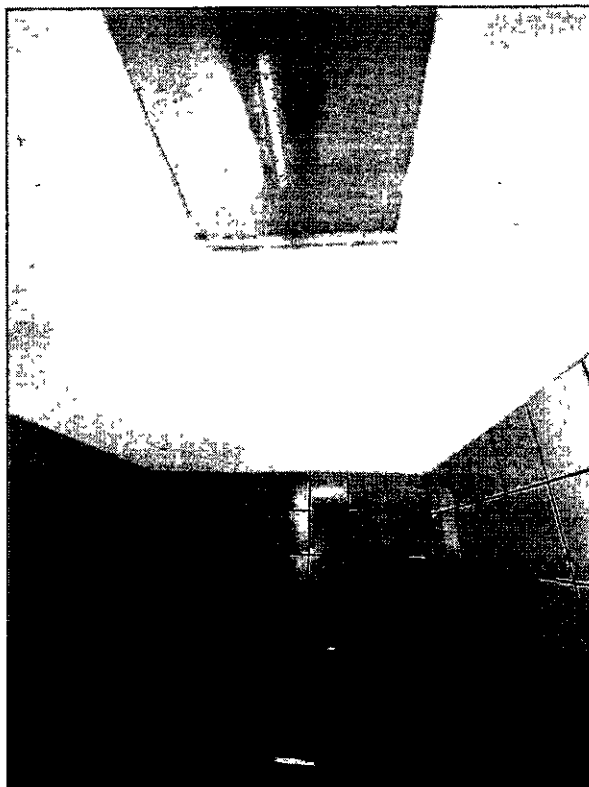


FOTO 15

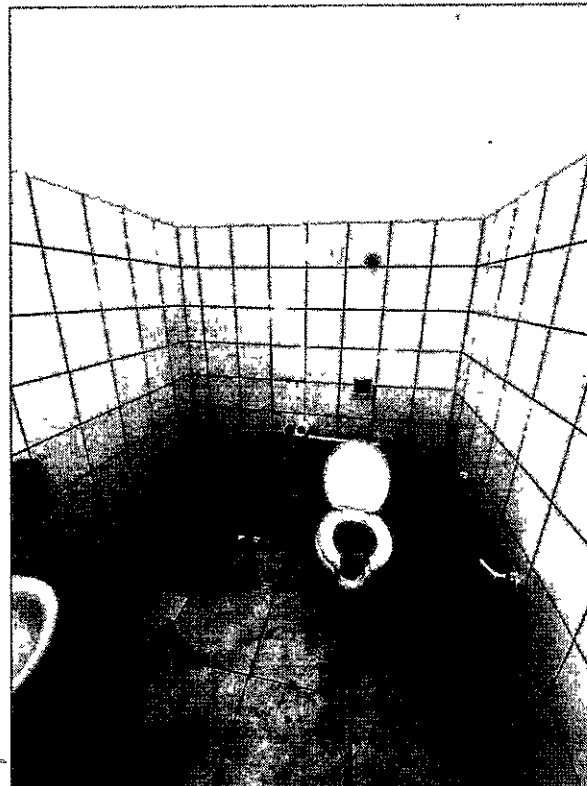


FOTO 16



FOTO 17



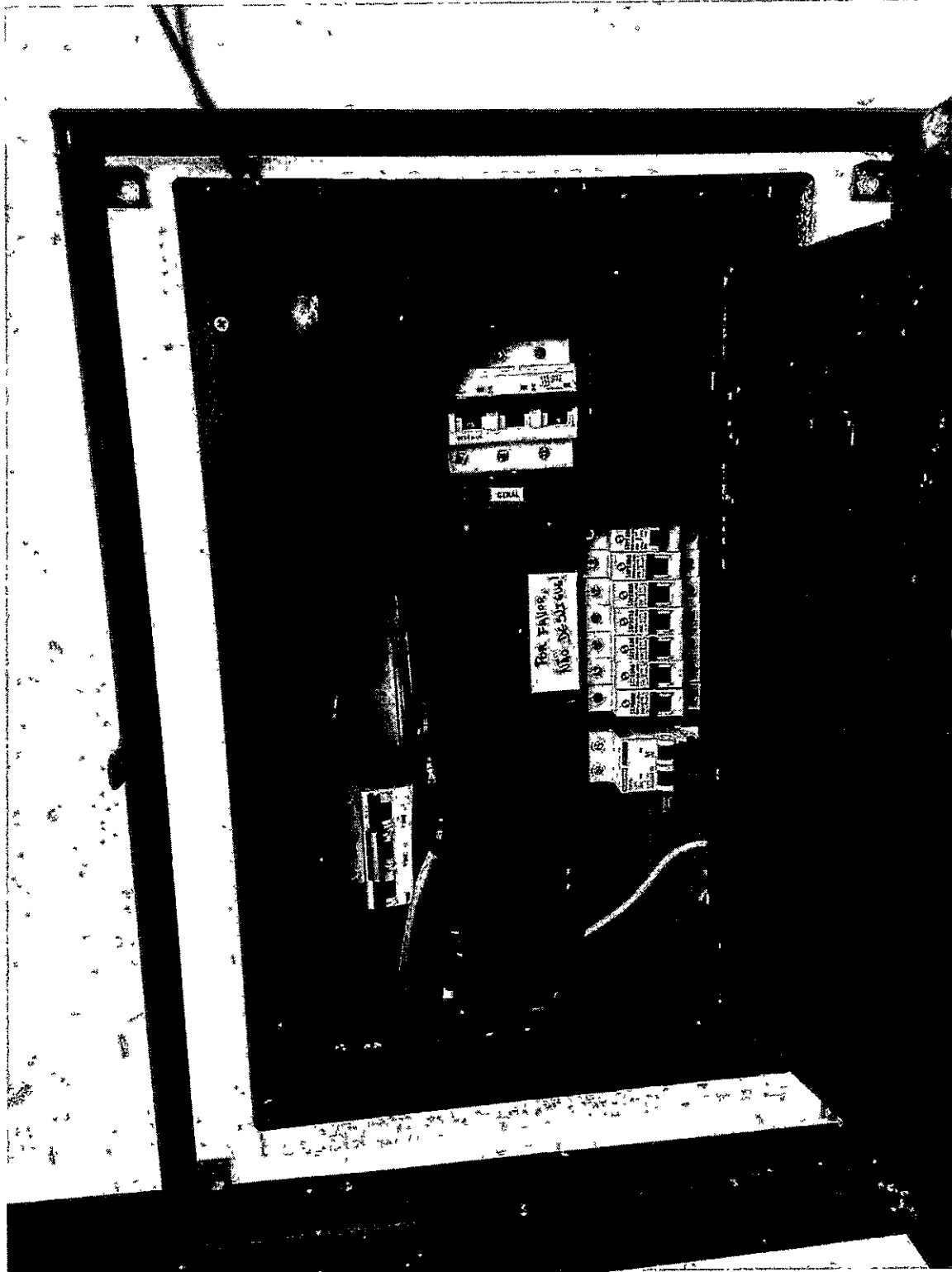


FOTO 18





FOTO 19

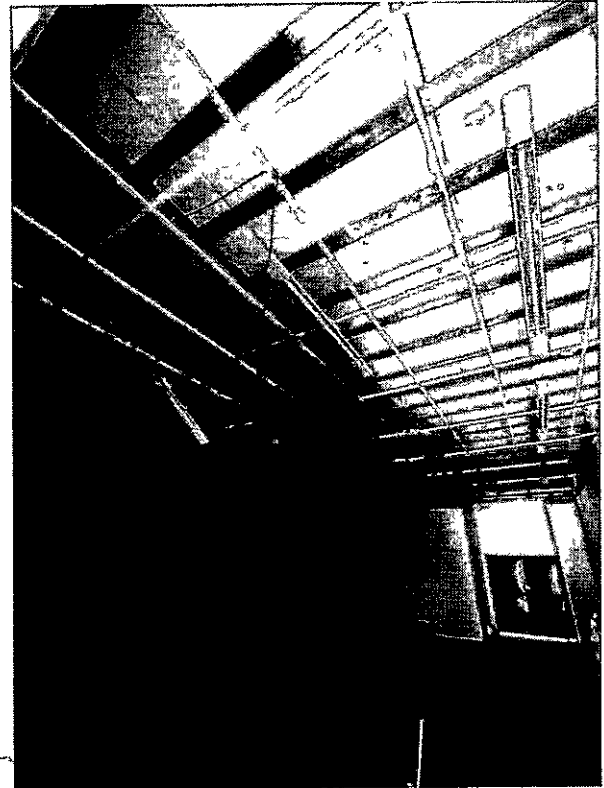
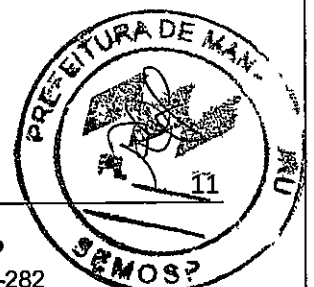


FOTO 20

SEMOSP
SECRETARIA MUNICIPAL DE OBRAS E SERVIÇOS PÚBLICOS



FOTO 21



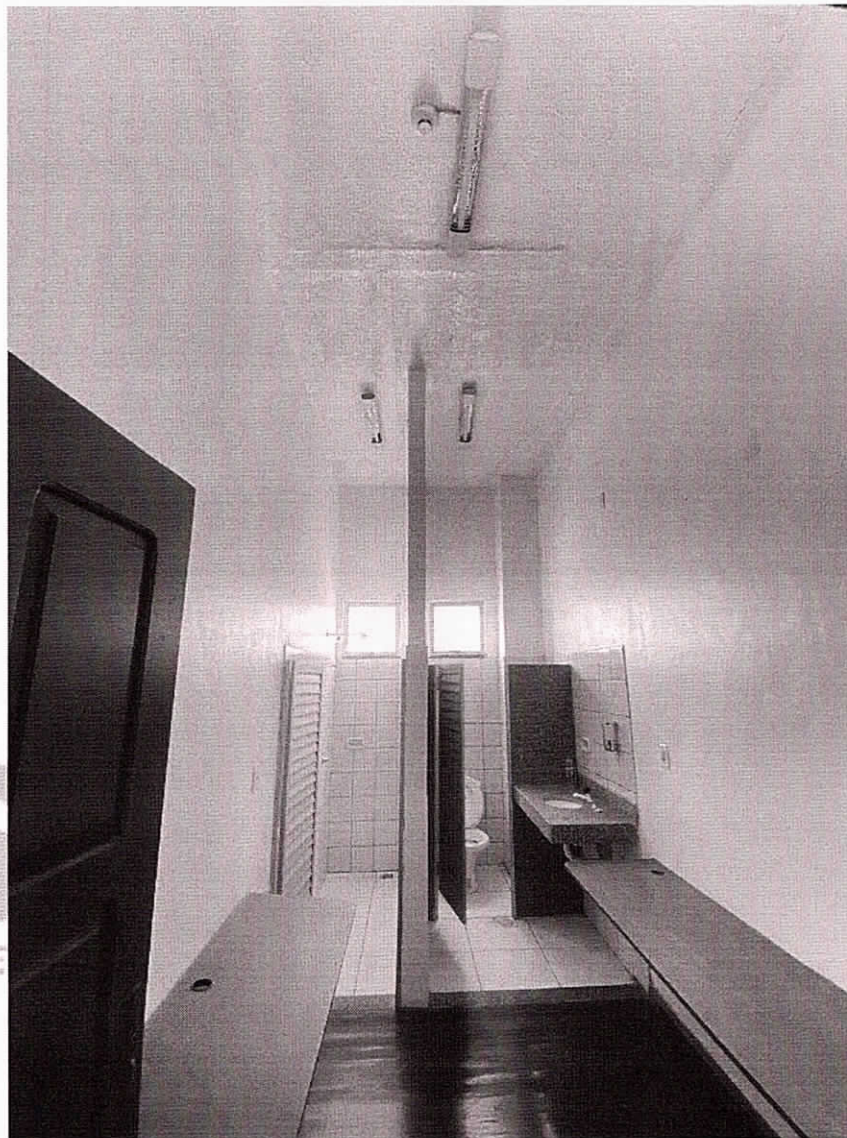


FOTO 22

Manacapuru - Am _____ de _____ de 2023.

Paulo Onety de Souza Filho
Engenheiro Civil
Responsável Técnico da SEMOSP
CREA-AM RNP 040865364-7

